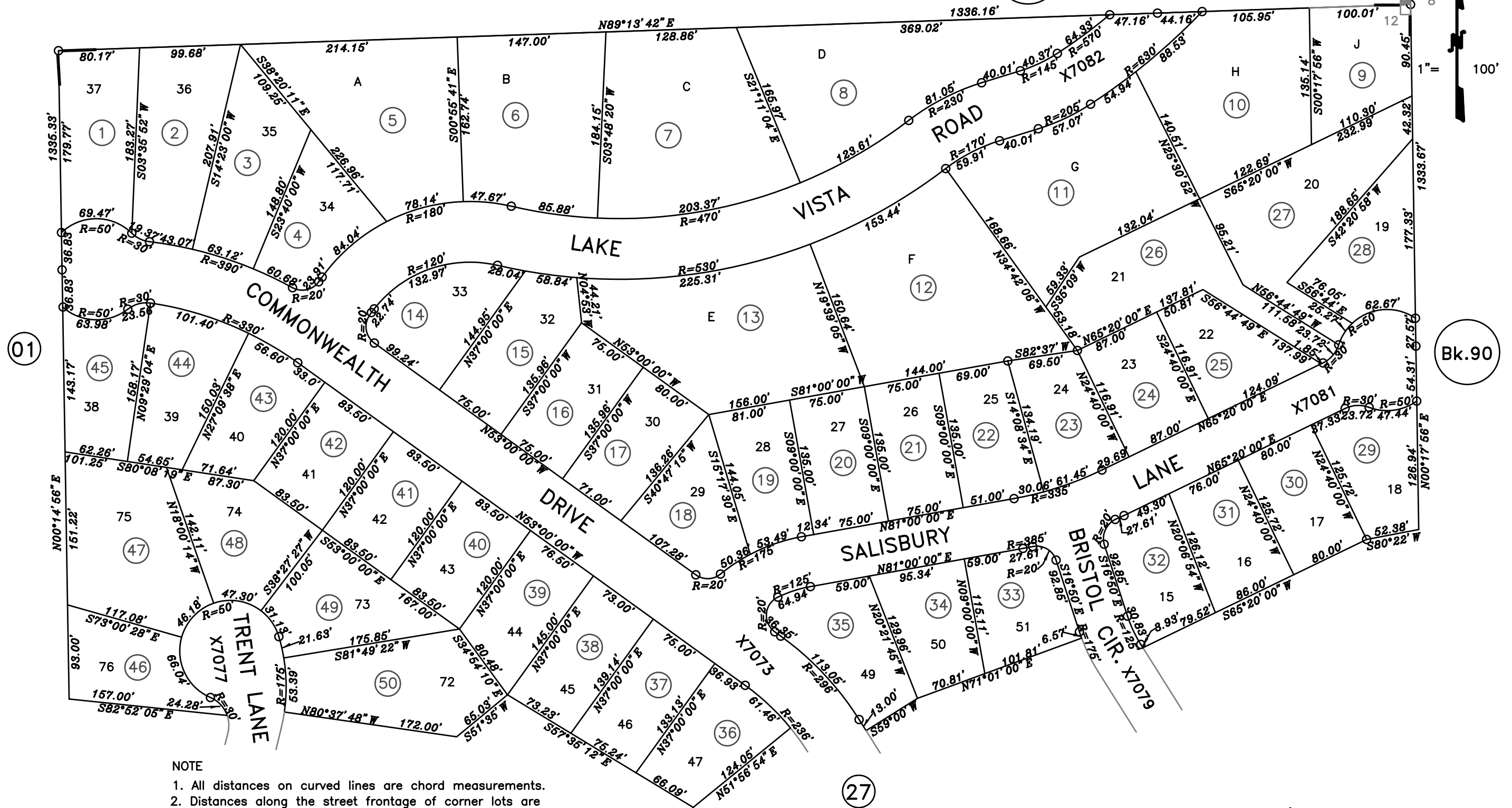


POR. N.E. 1/4, N.E. 1/4 SEC. 12, T.16N., R.17E., M.D.B. & M.
 Kingswood Estate Unit 5, M.O.R. Bk. I, Pg. 57

111-28

Bk.110

Bk.90



- NOTE
1. All distances on curved lines are chord measurements.
 2. Distances along the street frontage of corner lots are measured to the intersection of street lines produced unless otherwise noted.

NOTE

This map was prepared for assessment purposes only, and is not intended to illustrate legal building sites or establish precedence over local ordinances. Official information concerning size or use of any parcel should be obtained from recorded documents and local governing agencies.

Assessor's Map Bk.111Pg.28
 County of Placer, Calif.

NOTE
 Assessor's Block Numbers Shown in Ellipses.
 Assessor's Parcel Numbers Shown in Circles.